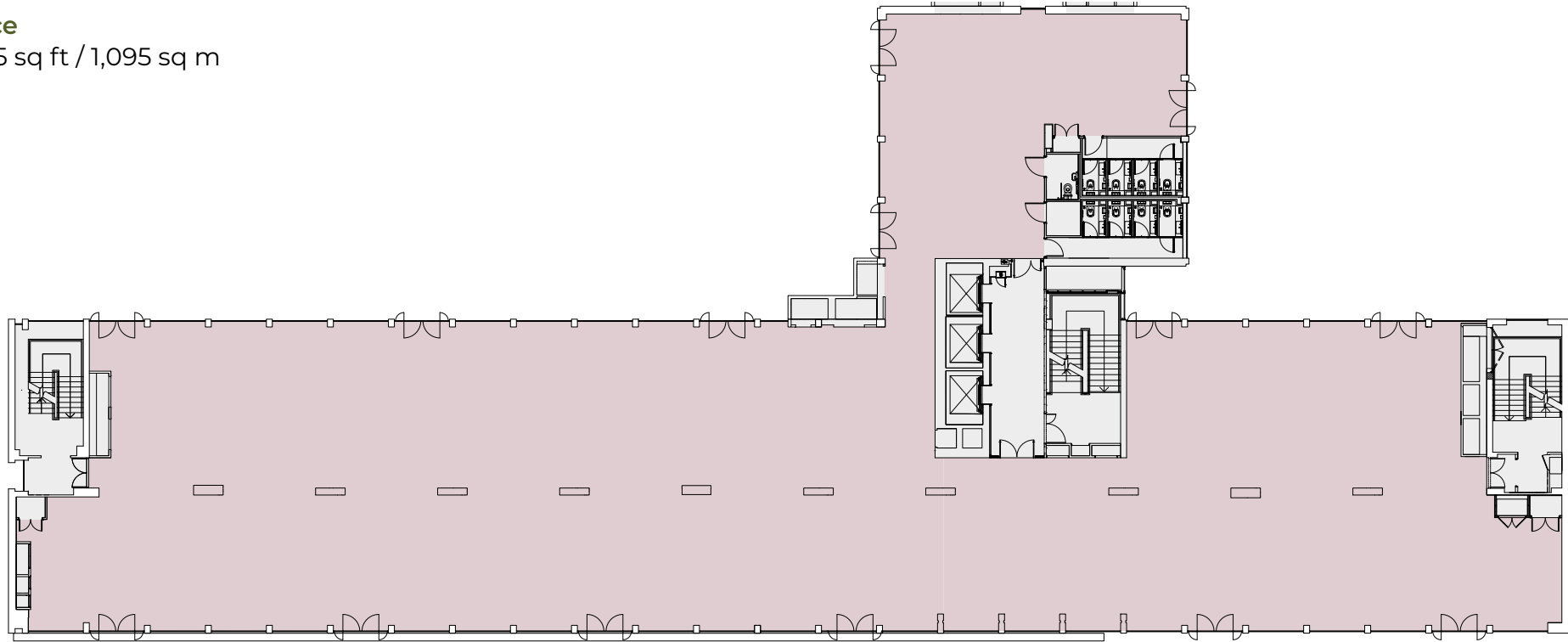


FLOOR PLANS

Typical (3rd floor)

Office

11,785 sq ft / 1,095 sq m



Blackfriars Road

- Office
- Core



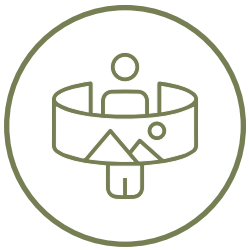
Not to scale.
For indicative purposes only.

FLOOR PLANS

Ninth

Roof terrace

3,175 sq ft / 295 sq m



360° views across the City



Available for private functions

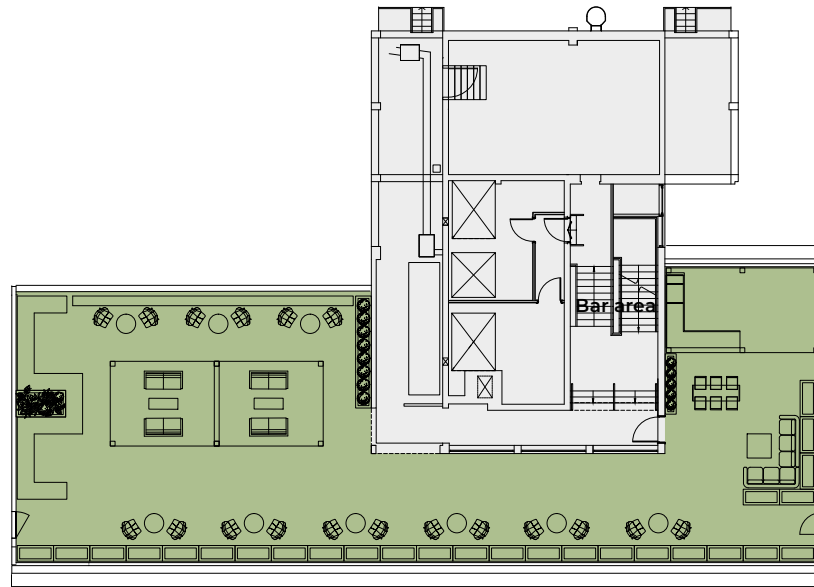


Rooftop bar facilities



Pergolas

- Terrace
- Core



Blackfriars Road



Not to scale.
For indicative purposes only.

FLOOR PLANS

Lower ground

Cycle store

1,359 sq ft / 126.3 sq m

Male changing

313 sq ft / 29.1 sq m

Female changing

327 sq ft / 30.4 sq m

Accesible changing

67 sq ft / 6.2 sq m

Gym / exercise studio

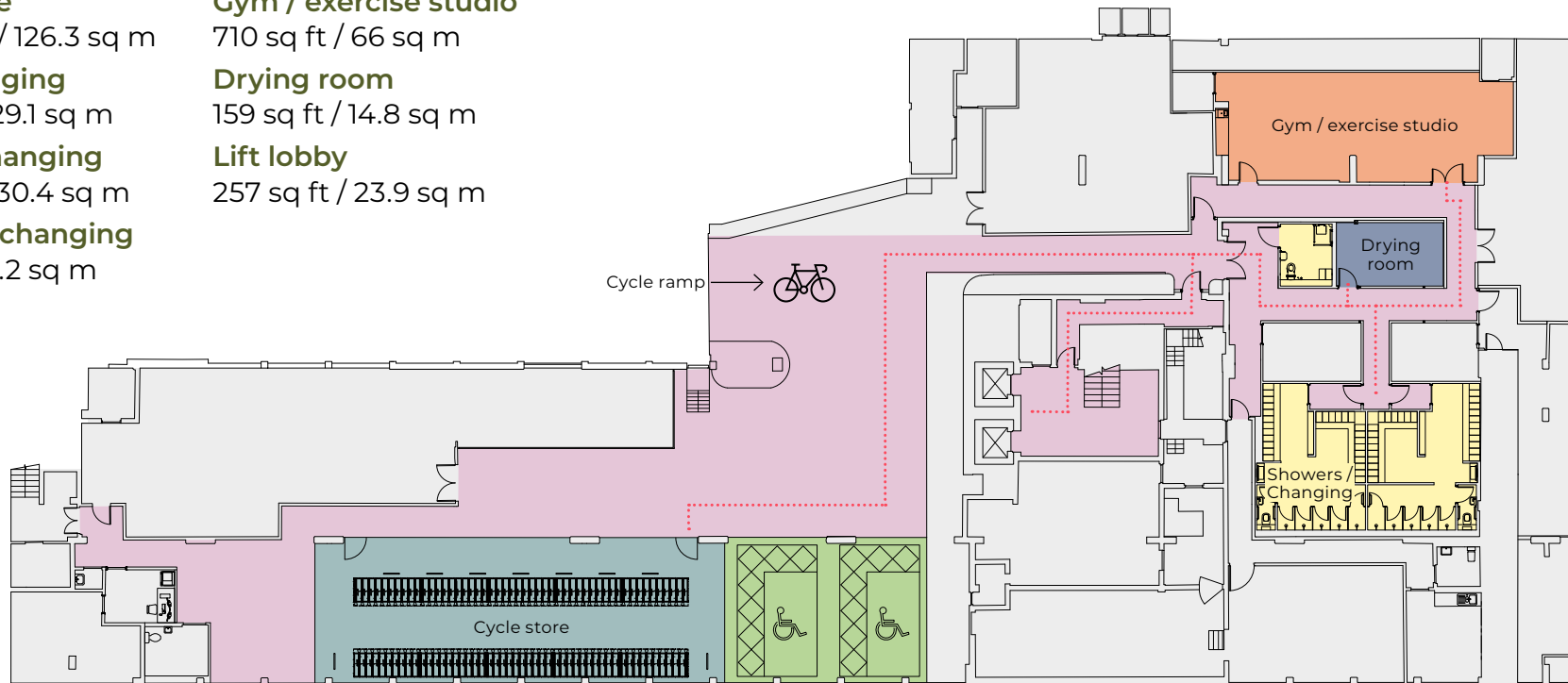
710 sq ft / 66 sq m

Drying room

159 sq ft / 14.8 sq m

Lift lobby

257 sq ft / 23.9 sq m



Blackfriars Road

- Showers / changing
- Gym/exercise studio
- Accessible parking
- Drying room
- Cycle Store
- Circulation
- Core



Not to scale.
For indicative purposes only.